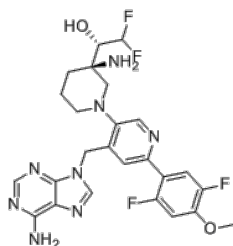


Product Name : KTX-1001
Cat. No. : PC-21038
CAS No. : 2604513-16-6
Batch No. : PC-2103801
Chemical Name : (S)-1-((R)-3-amino-1-(4-((6-amino-9H-purin-9-yl)methyl)-6-(2,5-difluoro-4-methoxyphenyl)pyridin-3-yl)piperidin-3-yl)-2,2-difluoroethan-1-ol

PHYSICAL AND CHEMICAL PROPERTIES

Molecular Weight : 546.53
Molecular Formula : C₂₅H₂₆F₄N₈O₂
Storage : Powder -20°C 12 Months
4°C 6 Months
In solvent -80°C 6 Months
-20°C 6 Months

Chemical Structure :



CAS: 2604513-16-6

ANALYTICAL DATA

Appearance : Solid powder
¹H NMR Spectrum : Consistent with
HPLC : Consistent with
NP : Consistent with
Purity (HPLC and/or LCMS) : >98%
Conclusion : The product has been tested and complies with the given specifications.

Caution: Product has not been fully validated for medical applications. Lab Use Only!

E-mail: tech@probechem.com